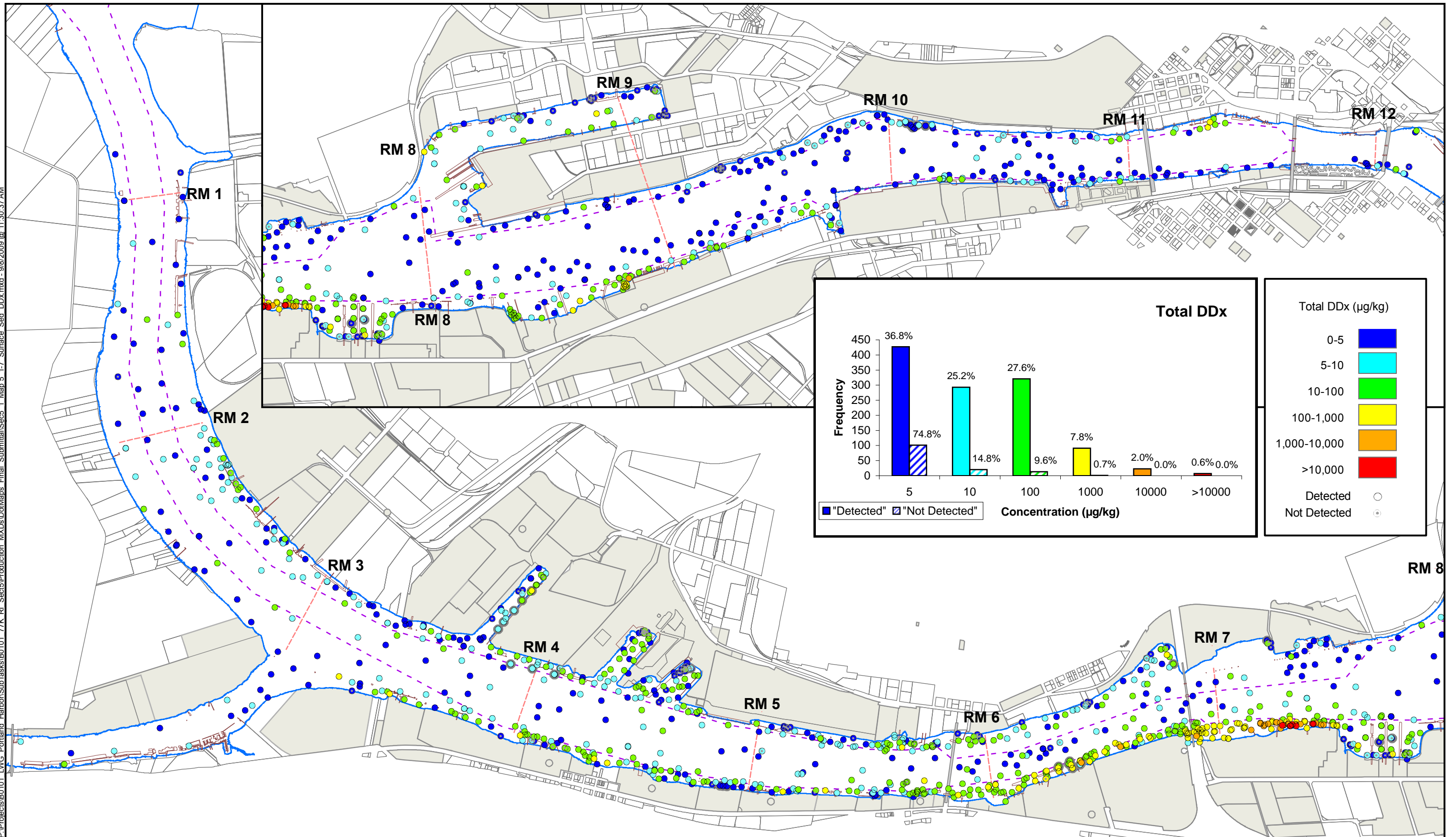


Attachment C

Portland Harbor Contaminant Distribution Maps

Source: *Portland Harbor RI/FS Remedial Investigation Report. Draft.* Prepared for the Lower Willamette Group. Portland, OR. October 27, 2009. Prepared by Integral Consulting Inc., Windward Environmental LLC, Kennedy/Jenks Consultants, and Anchor QEA, LLC.

P:\Projects\B0101 LWG Portland Harbor\SubTasks\B0101 77K RI Sect5\Production MXDs\DotMaps Final Submittal\Sec5 1 Map 5.1-7 Surface Sed DDX.mxd - 9/8/2009 @ 11:30:37 AM



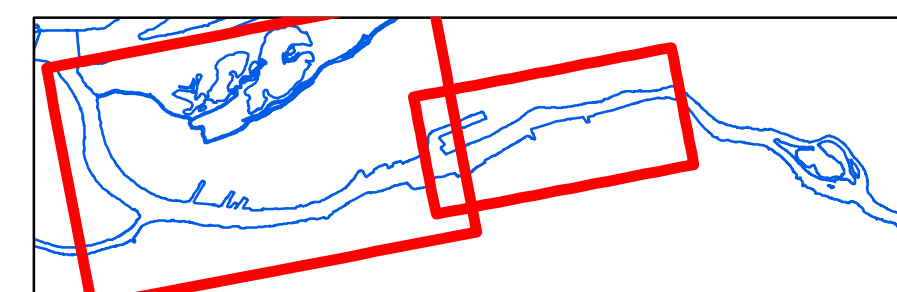
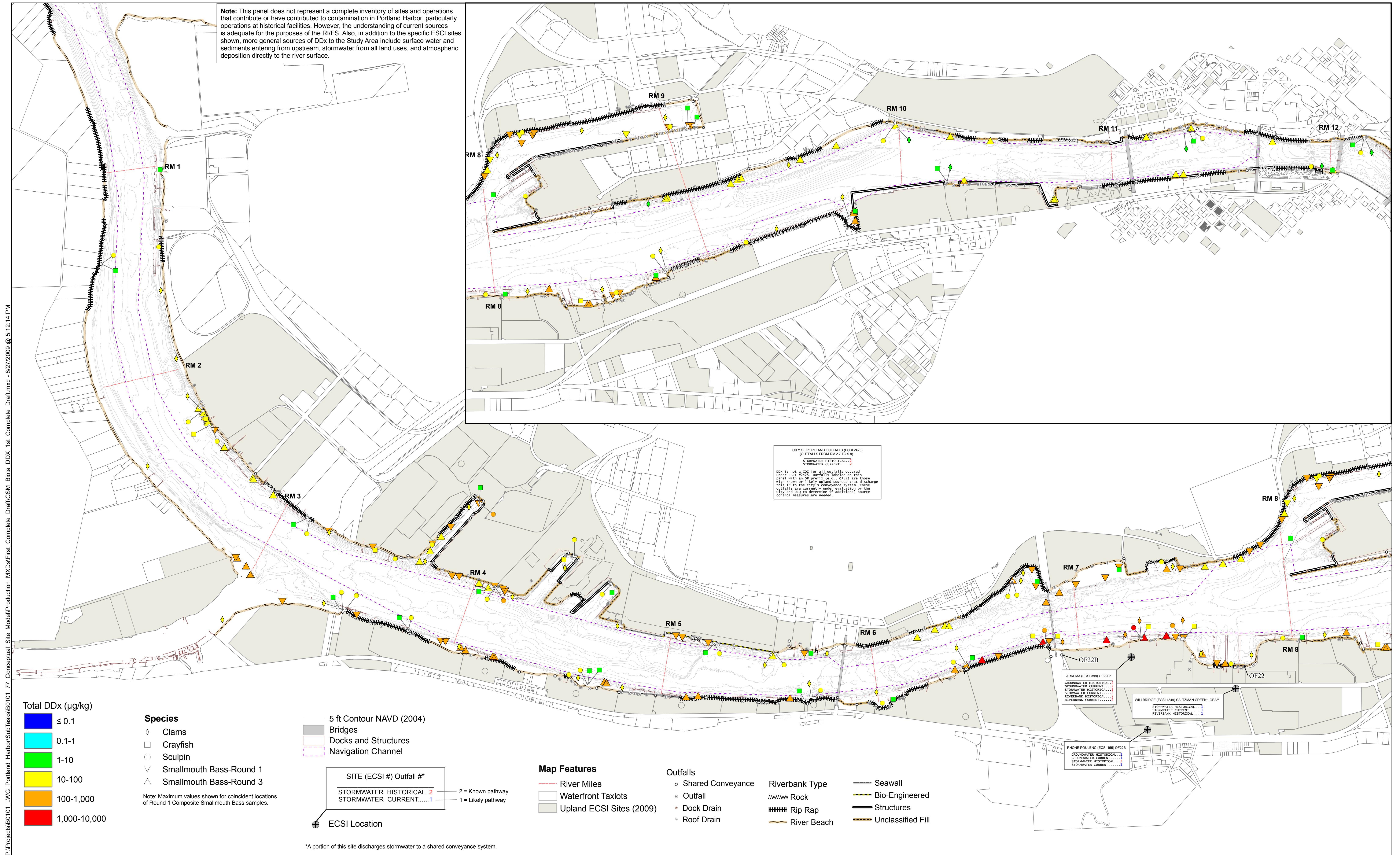
Map Features

- River Miles
- - - Navigation Channel
- River Edge +13 ft NAVD
- Bridges
- Docks and Structures
- Surface Dredge/Cap Locations
- Upland ECSI Sites (2008)
- Waterfront Taxlots

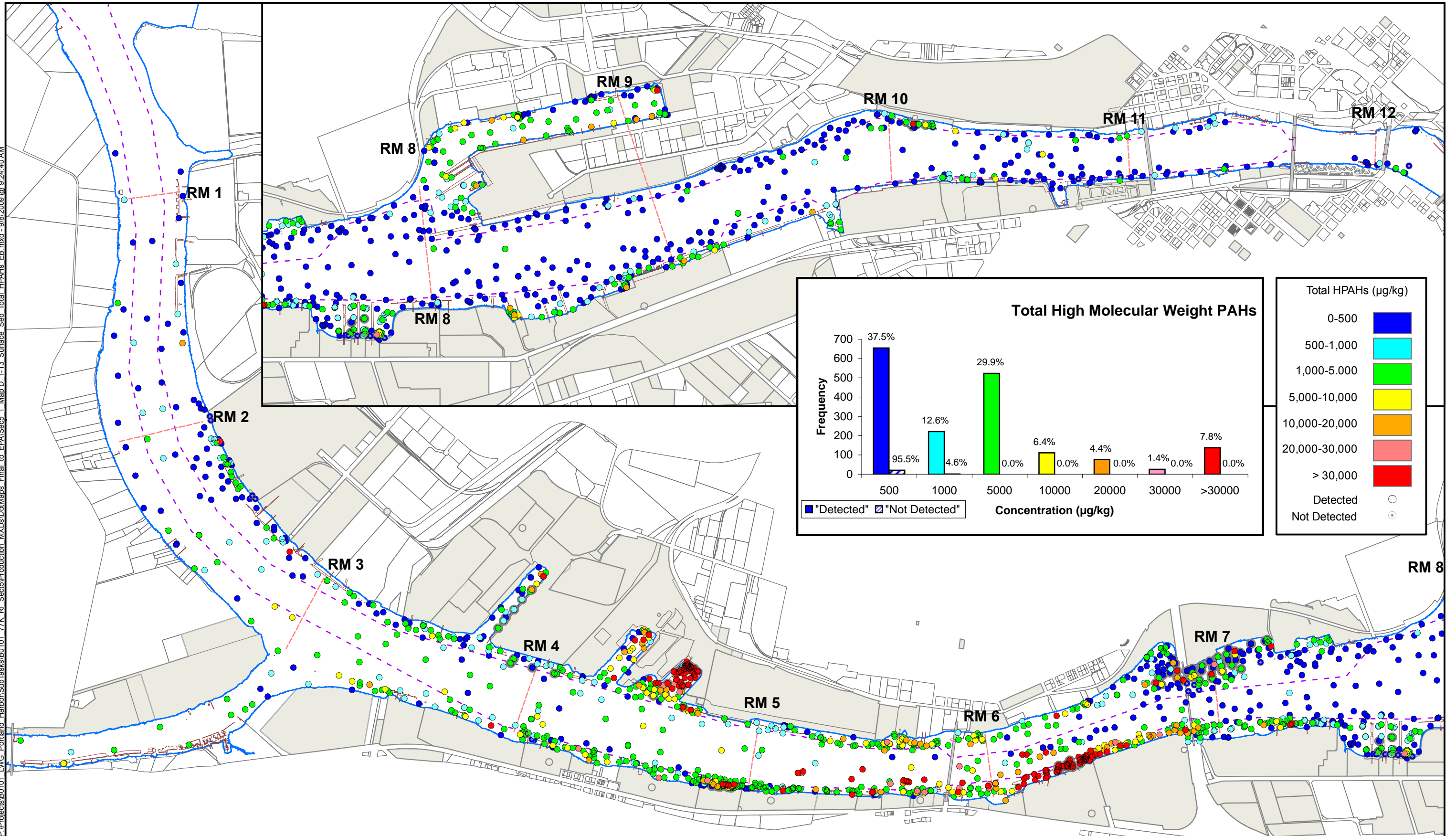
DRAFT

DO NOT QUOTE OR CITE
This document is currently under review by US EPA and its federal, state, and tribal partners, and is subject to change in whole or in part.

P:\Projects\B0101_LWG_Portland_Harbor\Subtasks\B0101_77_Conceptual_Site_Model\Production_MXD\First_Complete_Draft\CSM_Biota_DDX_1st_Complete_Draft.mxd - 8/27/2009 @ 5:12:14 PM



P:\Projects\B0101 LWG Portland Harbor\SubTasks\B0101 77K RI Sect5\Production MXDs\DotMaps Final to EPA\Sect5 1 Map.D 1-13 Surface Sed Total HPAHs EB.mxd - 9/8/2009 @ 9:24:40 AM



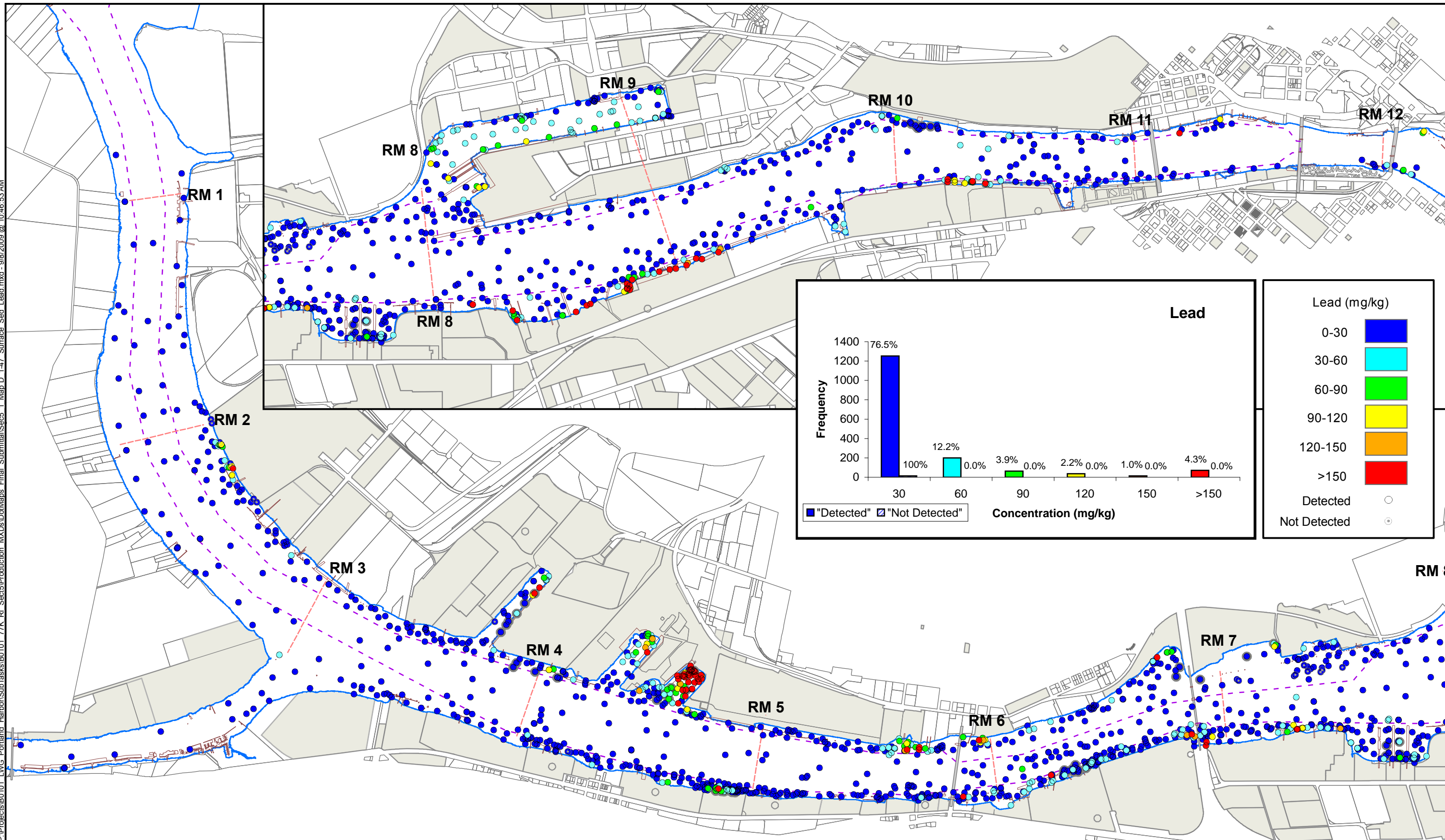
Map Features

- River Miles
- - - Navigation Channel
- River Edge +13 ft NAVD
- Bridges
- Docks and Structures
- Surface Dredge/Cap Locations
- Upland ECSI Sites (2008)
- Waterfront Taxlots

DRAFT

DO NOT QUOTE OR CITE
This document is currently under review by US EPA and its federal, state, and tribal partners, and is subject to change in whole or in part.

P:\Projects\B0101 LWG Portland Harbor\SubTasks\B0101 77K RI Sect5\Production MXDs\DotMaps Final Submittal\Sect5 1 Map D 1-47 Surface Sed Lead.mxd - 9/8/2009 @ 10:46:53 AM



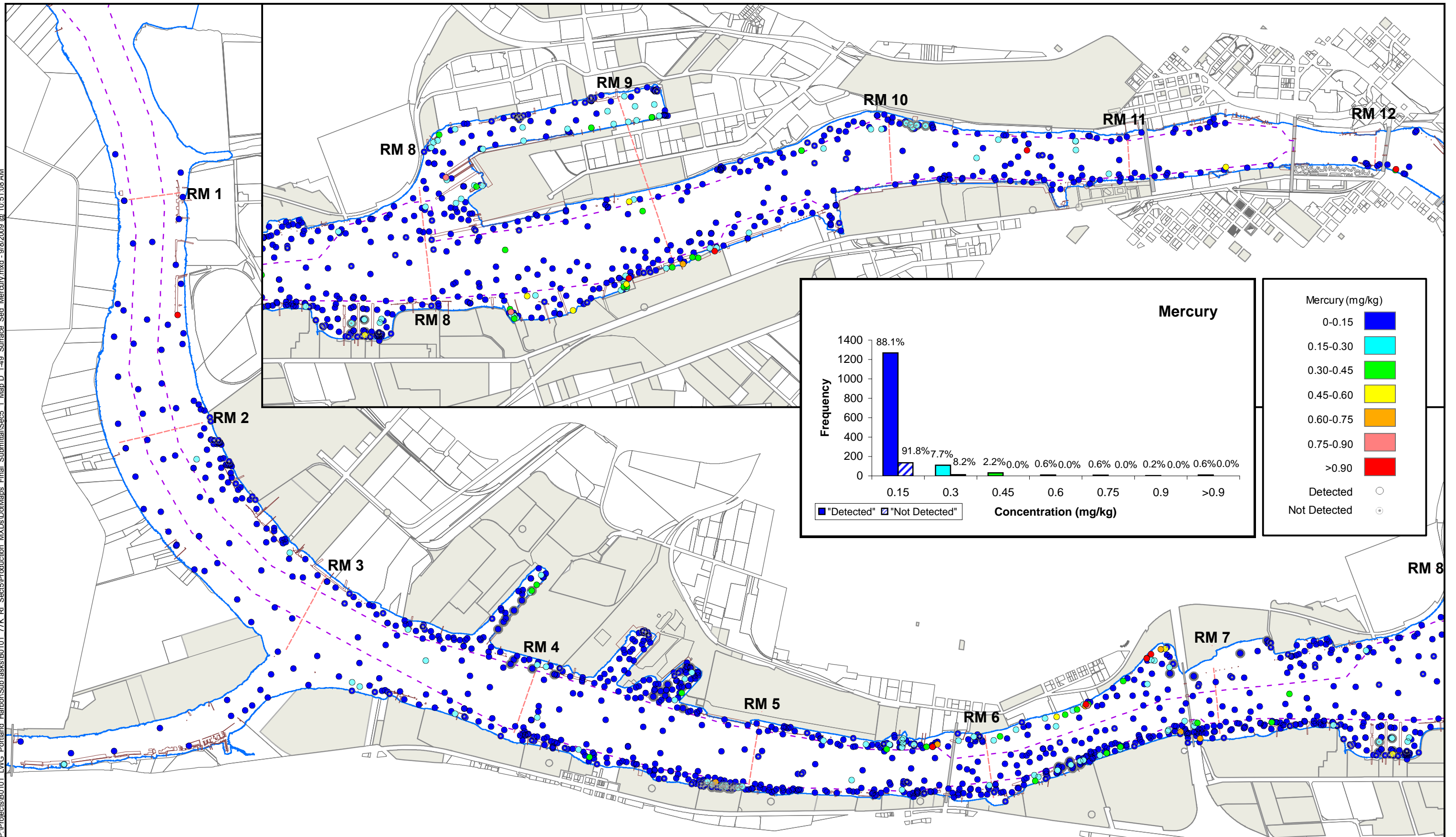
Map Features

- River Miles
- - - Navigation Channel
- River Edge +13 ft NAVD
- Bridges
- Docks and Structures
- Surface Dredge/Cap Locations
- Upland ECSI Sites (2008)
- Waterfront Taxlots

DRAFT

DO NOT QUOTE OR CITE
This document is currently under review by US EPA and its federal, state, and tribal partners, and is subject to change in whole or in part.

P:\Projects\B0101 LWG Portland Harbor\SubTasks\B0101 77K RI Sect5\Production MXDs\DotMaps Final Submittal\Sec5 1 Map D 1-49 Surface Sed Mercury.mxd - 9/8/2009 @ 10:51:08 AM



Map Features

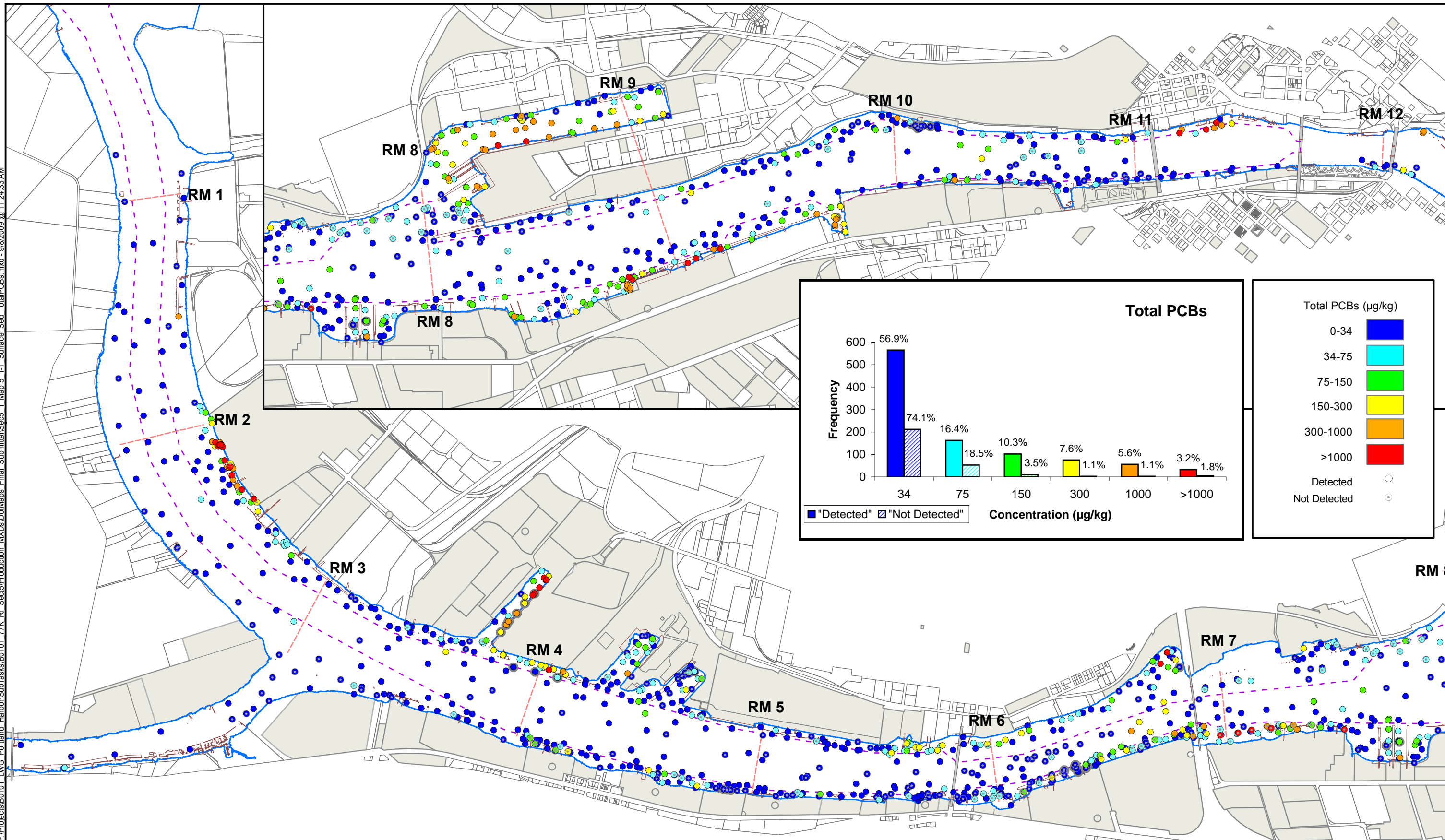
- River Miles
- - - Navigation Channel
- River Edge +13 ft NAVD
- Bridges
- Docks and Structures
- Surface Dredge/Cap Locations

- Upland ECSI Sites (2008)
- Waterfront Taxlots

DRAFT

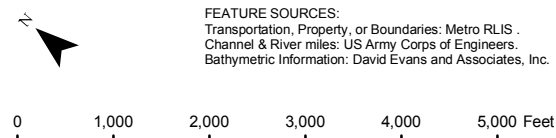
DO NOT QUOTE OR CITE
This document is currently under review by US EPA and its federal, state, and tribal partners, and is subject to change in whole or in part.

P:\Projects\B0101 LWG Portland Harbor\SubTasks\B0101 77K RI Sect5\Production MXDs\DotMaps Final Submittal\Sect5 1 Map 5.1-1 Surface Sed TotalPCBs.mxd - 9/8/2009 @ 11:24:33 AM



integral
consulting inc.

LWG
LOWER WILLAMETTE GROUP



FEATURE SOURCES:
Transportation, Property, or Boundaries: Metro RLIS
Channel & River miles: US Army Corps of Engineers.
Bathymetric Information: David Evans and Associates, Inc.

Map Features

- River Miles
- - - Navigation Channel
- River Edge +13 ft NAVD
- Bridges
- Docks and Structures
- Surface Dredge/Cap Locations

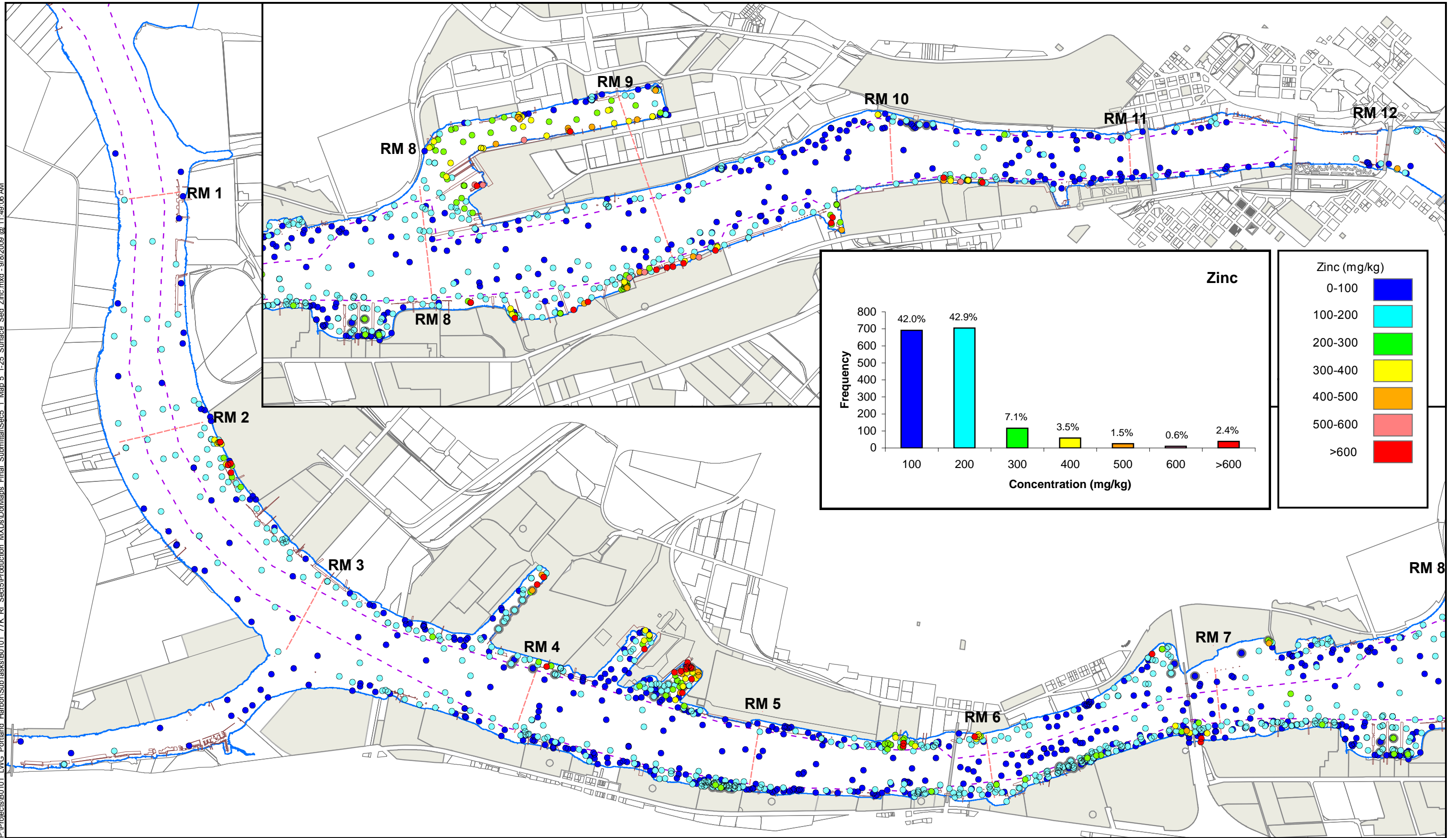
- Upland ECSI Sites (2008)
- Waterfront Taxlots

DRAFT

DO NOT QUOTE OR CITE
This document is currently under review by US EPA and its federal, state, and tribal partners, and is subject to change in whole or in part.

Map 5.1-1
Portland Harbor RI/FS
Draft Remedial Investigation Report
Surface Sediment Chemistry
Total PCBs (µg/kg)

P:\Projects\B0101 LWG Portland Harbor\SubTasks\B0101 77K RI Sect5\Production MXDs\DotMaps Final Submittal\Sect5 1 Map 5.1-25 Surface Sed Zinc.mxd - 9/8/2009 @ 11:49:06 AM



Map Features

- River Miles
- - - Navigation Channel
- River Edge +13 ft NAVD
- Bridges
- Docks and Structures
- Surface Dredge/Cap Locations
- Upland ECSI Sites (2008)
- Waterfront Taxlots

DRAFT

DO NOT QUOTE OR CITE
This document is currently under review by US EPA and its federal, state, and tribal partners, and is subject to change in whole or in part.